

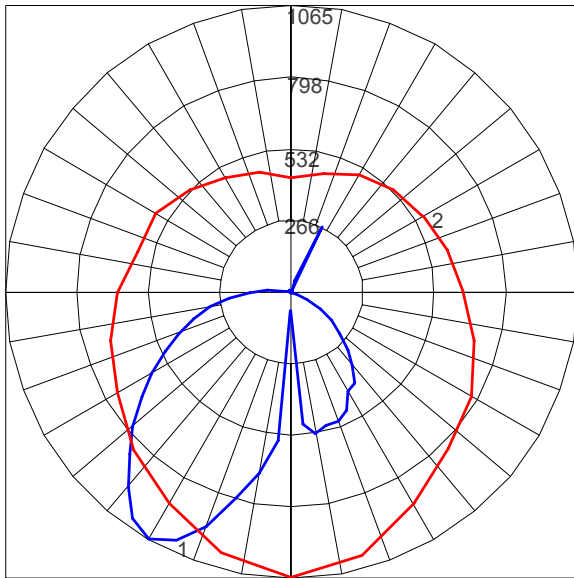


**LAMP DESCRIPTIONS**

LED ENGINE	DESCRIPTION	COLOR TEMPERATURE	LUMINAIRE LUMENS*	B.U.G. RATINGS
3000K LED	50W LED chip	3000K	2392	B1-U2-G1
4000K LED	50W LED chip	4000K	2705	B1-U3-G1

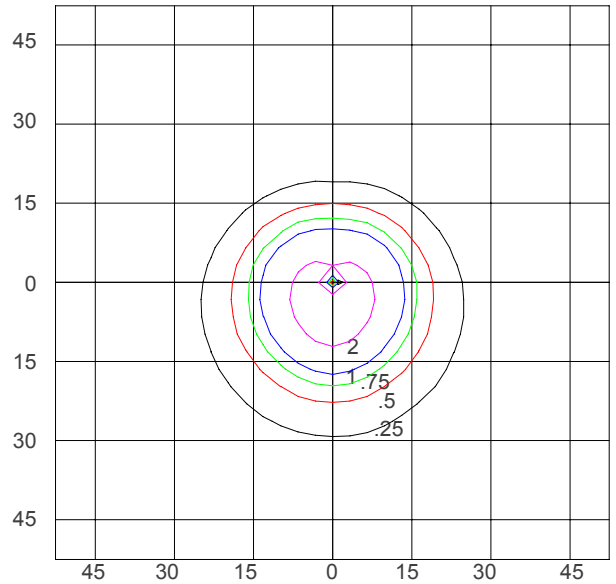
\*Luminaire lumens represents the absolute photometry for the luminaire, and indicates the lumens out of the entire fixture.

**POLAR CANDELA PLOT (50W LED, 3000K)**



Maximum Candela = 1064.61 Located at Horizontal Angle = 270, Vertical Angle = 30  
 #1 - Vertical Plane Through Horizontal Angles (270 - 90) (Through Max. Cd.)  
 #2 - Horizontal Cone Through Vertical Angle (30) (Through Max. Cd.)

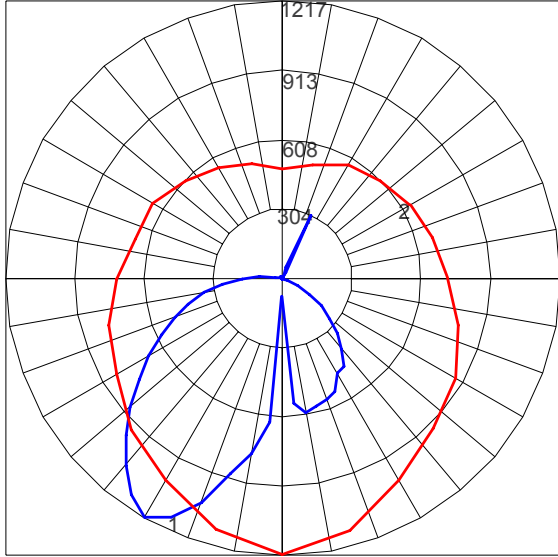
**ISOFOOTCANDLE PLOT (50W LED, 3000K)**



Isofootcandle Plot shows light distribution pattern at ground level with LED light engine. Readings have been taken assuming the photometric center of the luminaire to be 15.69 feet above ground level. IES files for standard lamps are available on our website.

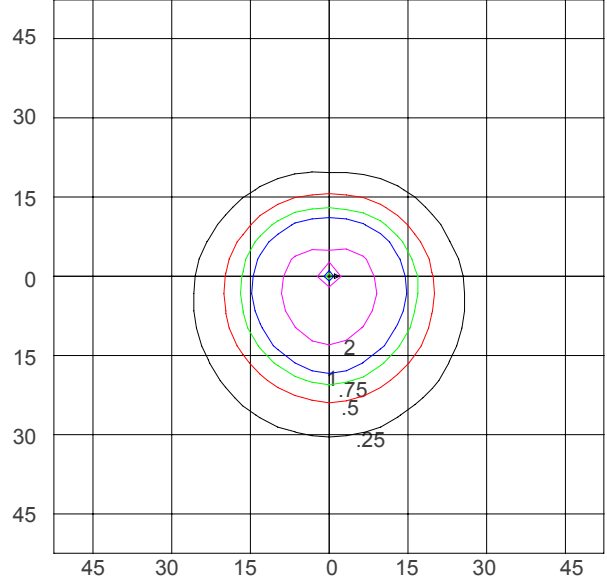


**POLAR CANDELA PLOT (50W LED, 4000K)**



Maximum Candela = 1216.79 Located at Horizontal Angle = 270, Vertical Angle = 30  
 #1 - Vertical Plane Through Horizontal Angles (270 - 90) (Through Max. Cd.)  
 #2 - Horizontal Cone Through Vertical Angle (30) (Through Max. Cd.)

**ISOFOOTCANDLE PLOT (50W LED, 4000K)**



Isofootcandle Plot shows light distribution pattern at ground level with LED light engine. Readings have been taken assuming the photometric center of the luminaire to be 15.69 feet above ground level. IES files for standard lamps are available on our website.